

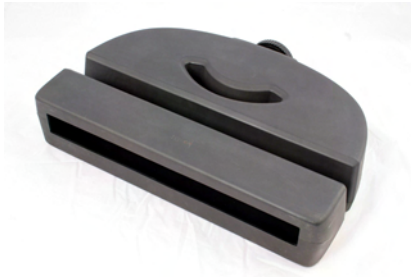
(Item #77000)

# Waterfall Spillway

## Installation Instructions

### PACKAGE INCLUDES

- Waterfall Spillway
- 2" MPT x Slip
- Instructions



The Waterfall Spillway is a cost-effective solution to help you create beautiful waterfalls and streams. This compact, yet extremely strong Waterfall Spillway is positioned at the starting point of the waterfalls. The pipe from your waterfall pump is connected to the back of the Waterfall Spillway where the incoming rush of water is diffused by internal barriers. These barriers help calm the water, providing a smooth flowing waterfall through the front of the spillway. The liner is attached to the Waterfall Spillway using the two rubber gaskets and retaining nut located on the back of the Spillway.

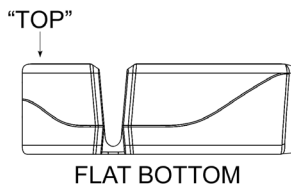
### Instructions

#### Step 1.

Build Waterfall and stream providing enough liner at the top of the waterfall to wrap over the top of the Waterfall Spillway. For information on waterfall and stream design and installation please visit our video gallery at [www.aquascapeinc.com](http://www.aquascapeinc.com).

#### Step 2.

Set the Waterfall Spillway into desired location.



Adjust the height of the Waterfall Spillway to match the starting point of the waterfall. A bed of gravel can be placed on top of the liner, beneath the Waterfall Spillway to raise the height of the spillway to the desired level.



The gravel will also provide a suitable base for leveling the Waterfall Spillway. The Waterfall Spillway should be level from side to side and tilt forward a ¼ bubble on a 2 foot level.



Step 3. Fold liner over top of Waterfall Spillway. It is recommended to provide some slack in the liner in case the position of the Waterfall Spillway needs minor adjustment during installation.



Step 4. Using a screw driver or awl, puncture a small hole in the liner through the center of the Waterfall Spillway fitting. This will be your reference point for the location of the liner connection.



Step 5. Unfold the liner back off the Waterfall Spillway and remove the retaining nut from the Waterfall Spillway fitting. Center the retaining nut over the puncture hole in the liner. Use a pen, marker, or sharp tool, such as an awl or screwdriver to trace a line around the inside of the nut



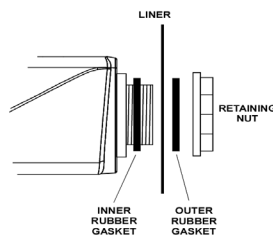
Step 6. Remove the retaining nut and trim a hole in the liner approximately 1/8 inch inside of the score mark.



Step 7. Remove the outer rubber gasket from the Waterfall Spillway fitting. Insert the hole in the liner over the Waterfall Spillway fitting. The liner should fit snug around base of the Waterfall Spillway fitting.



Step 8. Place the second rubber gasket onto the fitting. Note: The liner should be located between both rubber gaskets.



Step 9. Place retaining nut on Waterfall Spillway and hand tighten. The fitting is reverse threaded, please refer to the arrow located on the retaining nut for proper direction. Use a pair channel locks to further tighten down the retaining nut an additional 1/4 to 1/2 turn past hand tight being careful to not over tighten retaining nut, which could possibly crack the plastic fittings.



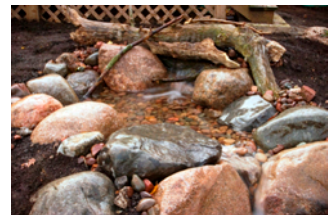
Step 10. Install the included pipe fitting into the back of the Waterfall Spillway. Use Teflon tape or silicone sealant (not included) on the threads of the fitting, in order to provide a water tight seal. Be careful to not over tighten pipe fitting, which could possibly crack the plastic fittings. The filter is now ready for the pipe to be installed.



Step 11. The joints around the face of the Waterfall Spillway and surrounding waterfall stones can now be filled with Aquascape Black Waterfall Foam. The waterfall can be operated once the foam is dry.



Step 12. Disguising the Waterfall Spillway using boulders, logs, gravel, soil, or other creative landscape material.



Step 13. With the waterfall running, go around and trim off any excess liner always leaving several inches above the water level/water splash as a precaution. The remaining liner edges can be covered with gravel or other suitable landscape material.

Aquascape warrants the Waterfall Spillway that it will be free of manufacturing defect for the lifetime of the product if properly installed and maintained. If upon Aquascape's inspection, the Waterfall Spillway shows evidence of a manufacturing defect, Aquascape's liability are limited, at Aquascape's option, to the repair of the defect, or the replacement of the defective product. There are no warranties either expressed or implied, including the implied warranties of merchantability and fitness for a particular purpose, which extend beyond the warranties contained in this document. Aquascape shall not be liable for any incidental, consequential or other damages arising under any theory of law whatsoever.

**LIFETIME  
WARRANTY**