



Spring Care

Spring Plant Care

When you stock up for your spring gardening needs, don't forget to stock up on some items for your pond as well.

Aquascape's Aquatic Planting Media is an all natural, non-toxic alluvial planting media which is safe for fish. It's a fine-grained soil perfect for supporting your aquatic plants.

EcoTabs™ Fertilizer tablets feed aquatic plants for up to 45 days. Each contains a 15-5-10 nutrient mix. The low phosphorous ratio helps keep water clear.

Aquascape's AquaClearer™ Extreme Bacteria is available in dry or liquid formats, AquaClearer™ Extreme contains bacteria and enzymes that are scientifically blended and tested to reduce sludge, uneaten fish food, fish waste, and excess nutrients that cause poor water quality and clarity. Safe for fish and plants.

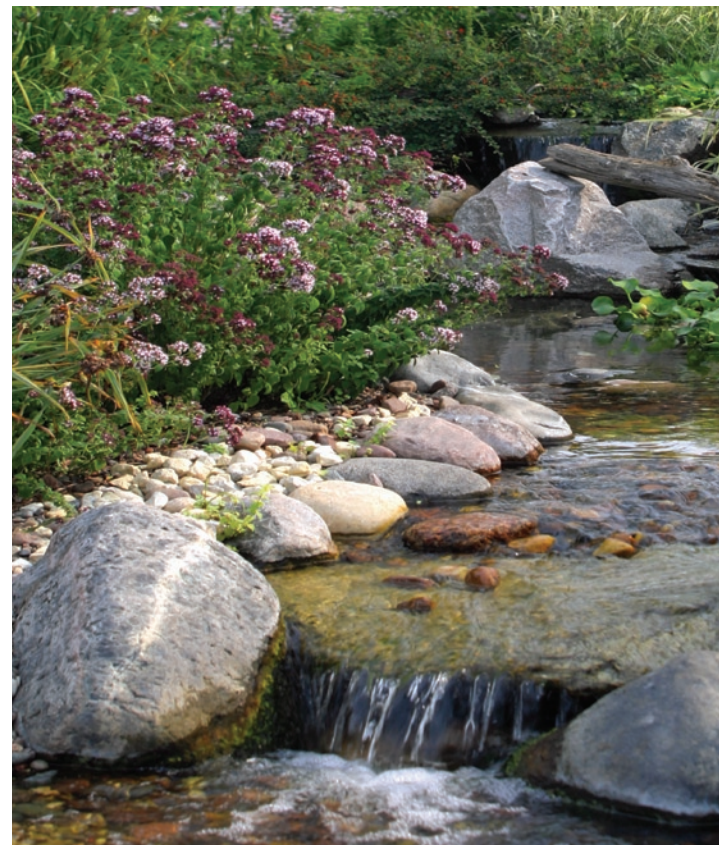
Aquascape's EcoBarley™ is an easy-to-use, quick acting pellet. It can be used inside most filters and skimmer system, as well as set off to the side of the pond. A mesh bag is included for easy application. EcoBarley™ helps keep your pond clear.

Aquascape's Ecosystem Aphid Repel is tested and approved by top aquatic nurseries. Keep insects off aquatic and terrestrial plants for 7 days. 100% safe for fish and plants.

Aquascape's Planting Baskets are specially designed to allow water to flow through the holes, keeping your pond plants' feet wet. Stock up on different shapes and sizes to give you the ability to create a garden with a variety of plants.

ADDITIONAL RESOURCES:

- *Pond Building for Hobbyists* book
- *The Ecosystem Pond* book
- *Hobbyist's Guide to Pond Plants* book
- *Hobbyist's Guide to Pond Fish* book
- www.aquascapeinc.com
- www.pondlifestyles.com



Get your water garden off to
a good start in the spring.

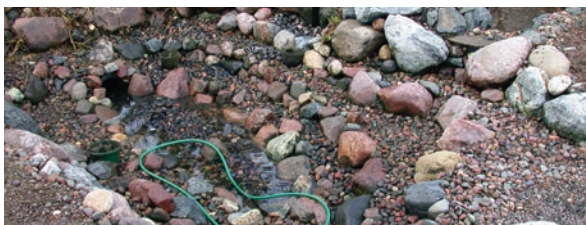


Key Questions

Spring is simply the most exciting time of year. In all climates, there's fresh growth all over the landscape, and everything is bursting with life. Your water feature is no different. As it slowly awakens from winter hibernation, there are some things that you can do to make sure your water feature gets off to a good start in spring.

- **How do I know if I need to clean my pond in the spring?**

There are a couple things to help you look for to determine if your pond needs an all-out cleaning, or if it just needs to be tidied up a bit. First, if there is a layer of "crud" at the bottom of the pond and the water is dark in color (almost like a cup of tea), it would be a good idea to do a full clean-out. On the other hand, if there is just a small amount of debris, you can just get into the pond and stir everything up and capture the debris into a fine mesh skimmer net.



- **How do I perform a full clean-out of my pond?** First, remove the water by placing a clean-out sump pump, or siphon hose, in the deepest point of the pond and drain into the surrounding landscape. Be sure to relocate the hose several times to allow the water to seep into the ground and not flood the yard. Once most of the water is removed, remove any large debris by hand, then hose down the inside of the pond using a pressure washer or a garden hose with a sprayer. This process should take about 15 minutes. Then rinse the rocks without a spray nozzle, periodically turning on the pump to clear out the dirty water. Remove the pump and begin filling the pond.

- **What do I do with my fish when performing a pond clean-out?**

If you have fish, fill a wading pool or similar container with some of your pond water before you drain the pond. To make it easier to catch the fish, wait until the water level has dropped to below the second shelf. Use a net to catch the fish and transfer them to the holding tank. Tightly place a net over the tank to keep the fish from jumping out, and don't allow them to be in the holding tank for more than a few hours. After the pond is cleaned and refilled, dechlorinate the water before you add the fish back into the pond. Slowly add some of the newly dechlorinated pond water to the holding pool to acclimate the fish to the new water. This will prevent the fish from going into shock from any sudden temperature change. For more information on fish care, see *The Hobbyist's Guide to Pond Fish*.



- **Do I need to clean the filters?** Yes, late winter/early spring, when the water temperatures are at or below 45°, is the best time to clean your filters since bacteria has not yet begun to grow for the new season. After you remove the filter media, remove the dirty water and debris at the bottom of the filter box. Rinse the filter media thoroughly and put them back in place.
- **Is spring the best time to divide my water lilies?** Yes. By the third or fourth year, you'll notice the lily's leaves are a little smaller and it may have fewer blooms, and it's harder to feed them with EcoTabs™ plant fertilizer because the pot is too crowded. Spring is the best time to divide water lilies when the plants are coming out of dormancy and are just beginning to grow, or when you see the first small leaves reaching the surface. Use Aquascape's Planting Baskets for your newly divided lilies. For step-by-step instructions on dividing aquatic plants, refer to *The Hobbyist's Guide to Pond Plants*.

- **Can I add new aquatic plants to my pond in the spring?** Absolutely! In fact, once you've drained and washed out your pond during a full clean-out, you can place new water lilies at the pond's bottom. This is also a good time to add submerged plants at the bottom for fish to spawn or hide in. You can plant marginals at the pond's edge too. Aquascape's Aquatic Planting Media is a great soil for supporting your aquatic plants, and it's safe for fish!
- **When do I add bacteria to the pond?** Begin adding Aquascape's AquaClearer™ Extreme liquid or dry bacteria as soon as you have consistent water temperatures of 55°F or higher. If you want to get a head start, consider starting with Aquascape's AquaClearer™ Extreme Cold Water Formula, which can be added to water with temperatures between 45°F - 55°F. Spring is also the best time to add Aquascape's EcoBarley™ to your pond or filter. This product is designed to help keep your pond water clear for the new season



- **When can I begin feeding my fish?** As soon as water temperatures reach 55°F, you can start feeding your fish. It's best to start with Aquascape's Koi Balance™ Lo Temp food until fish are fully active, then switch to your regular Aquascape fish food.