

POWERBEAD[®] **Filter**

Installation & Maintenance Instructions

FOR MODELS:

- **4000 GPH**
(Item #29506)
- **8000 GPH**
(Item #29507)



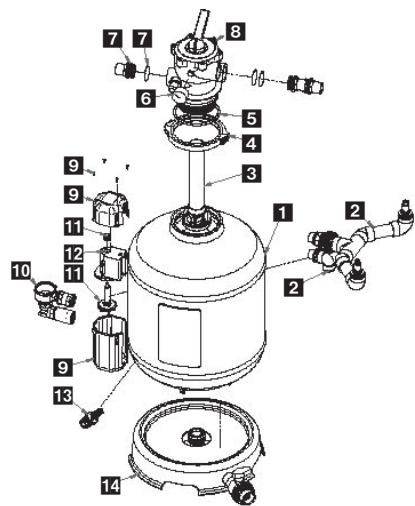
Made in Italy for:
Aquascape, Inc.
St. Charles, IL 60174 • Brampton, ON L6T 5V7
www.aquascapeinc.com

2 YEAR
WARRANTY

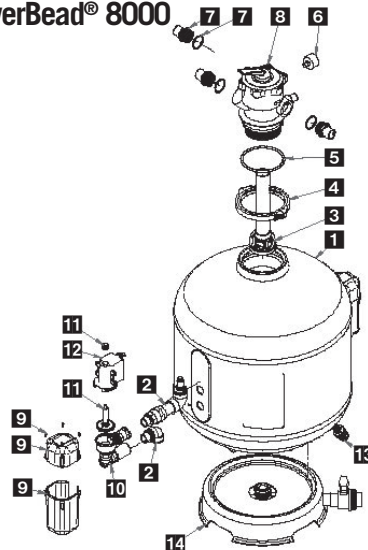
POWERBEAD[®] Filter

Installation & Maintenance Instructions

PowerBead[®] 4000



PowerBead[®] 8000



Contents

#	Part Description	Item #
1	PowerBead Tank	
2	Inner Jets	
3	Diffuser	
4	Clamp	
5	O-Ring	
6	Pressure Gauge	
7	Hosetail	
8	6-Way Valve	

#	Part Description	Item #
9	Agitation Pump Housing	
10	Volute	
11	Impeller	
12	Agitation Pump	
13	Drain Plug	
14	Bottom Drain and Base	
15	Beads (not shown)	

	PowerBead [®] 4000	PowerBead [®] 8000
Max. Pond Capacity	4000 gallons	8000 gallons
Max. Fish Quantity	44 lbs.	77 lbs
Bead Quantity	28 lbs.	56 lbs
Max Flow Rate	2600 gph	4000 gph

⚠ WARNING!

- The filter has been designed to work in fresh water ponds.
- Do not submerge the filter in the water.
- Any pond related electrical equipment requires a GFI protected circuit. Always have a qualified electrician install any electrical outlets. Test your GFI outlet on a regular basis.
- Make sure that the product is compatible with the features of your electric system.
- Never pull the electric cable.
- Before handling the filter make sure to unplug all devices associated with the filter.

1) Installation

Positioning the Filter

- The filter must not be buried and must be positioned out of the pond.
- The drain tap and the drain valve (13-14) must be easily accessible.
- The filter must be positioned on a firm base and must be able to hold the weight once full of water.
- Once installed and refilled with water, the filter cannot be removed.

Adding the Beads

- Make sure the bottom drain and drain plug (13-14) are closed.
- **FIRST: FILL THE FILTER WITH WATER UNTIL IT'S ¾ FULL. IT IS IMPORTANT TO HAVE WATER INSIDE THE FILTER BEFORE ADDING THE BEADS. IF YOU POUR THE BEADS BEFORE FILLING THE FILTER WITH WATER, YOU WILL LOSE SOME BEADS DURING THE FIRST BACKWASH.**
- Pour the filter media (Beads) into the tank.

6-Way Valve Assembly

- Clean the neck of the tank
- Make sure that the soft O-Ring (5) is well positioned on the multifunction valve.
- Insert the diffuser (3) into the 6 way valve (8).
- Assemble the valve (8) on the tank fixing it with the supplied locking clamp (4).

Pressure Gauge Assembly

- Take off the multifunction valve cap.
- Apply some Teflon tape around the pressure gauge (6) thread to guarantee a proper seal.
- Screw the pressure gauge (6) onto the 6 way valve (8).

2) Pipe Connection

- Connect the pipe coming from the pump (sold separately) to the outlet marked “Pump” on the filter. For best results the pump should always be prefiltered with the use of a skimmer.
- The discharge of the filter is marked “Pond”. The pipe that is connected to the discharge can be run back to the pond or to a Biofalls.
- On the discharge marked “Waste” run the pipe to a drainage area.
- It is also recommended to connect some pipe to the bottom drain and run it to a drainage area.

3) Filter Starting (Fig. 1)

- 1) Place the 6-Way valve (8) in the “Filter” position. (Sector n. 1).
Attention!! The valve selector must be moved only when the pump is off. To move it push it down and at the same time turn it towards the desired position.
- 2) Check that the bottom drain (14) and the drain plug (13) are closed.
- 3) The agitation system (12) must be switched off.
- 4) Switch on the pond pump.
- 5) Now your filter can start working.

The water pushed by the pump enters the tank through the 6-Way Valve (8) and the diffuser pipe (3), goes through the beads to finally exit in the pond through the 6-Way valve (8).

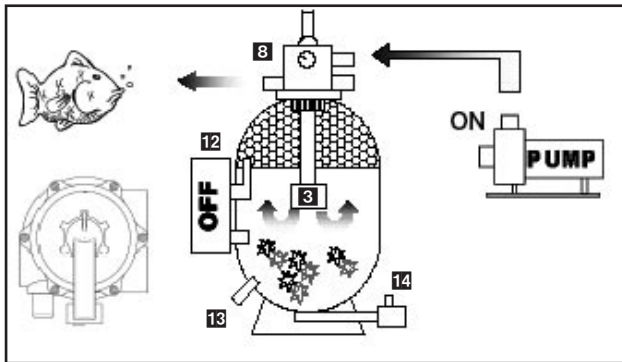


Figure 1

4) Filter Cleaning (Back Flushing) (Fig. 2)

- 1) While the filter is working, open the bottom drain (14) letting out the deposited dirt. Leave the drain open until the dirty water becomes clear. (Normally after 4-6 seconds)
- Attention! It is normal that during the deposit draining some beads run out together with the dirt.**
- 2) Switch the pump of the pond off.
- 3) Switch the 6-Way valve (8) to the “Closed” (Sector number 5) position
- 4) Switch the agitation system on (12), for around 3-5 minutes. The agitation system rinses the dirt and debris from the beads. To switch on the agitation system (12) simply plug the cord into an electrical socket.
- 5) Switch the agitation system off (12).

- 6) To wash the beads properly place the 6-Way valve (8) in the “Backwash” position. (Sector number 2)
- 7) Open the bottom drain (14).
- 8) Switch the pond pump on. This allows the water to flow from the top to the bottom through the beads, carrying the dirt and discharging it through the bottom drain (14).

Leave the pump on until the water coming out from the bottom drain starts to run clear, it is advised not to leave it for more than 1-2 minutes time. During this cleaning phase a lot of water will flow out. During the cleaning phase some beads may run out from the bottom drain.

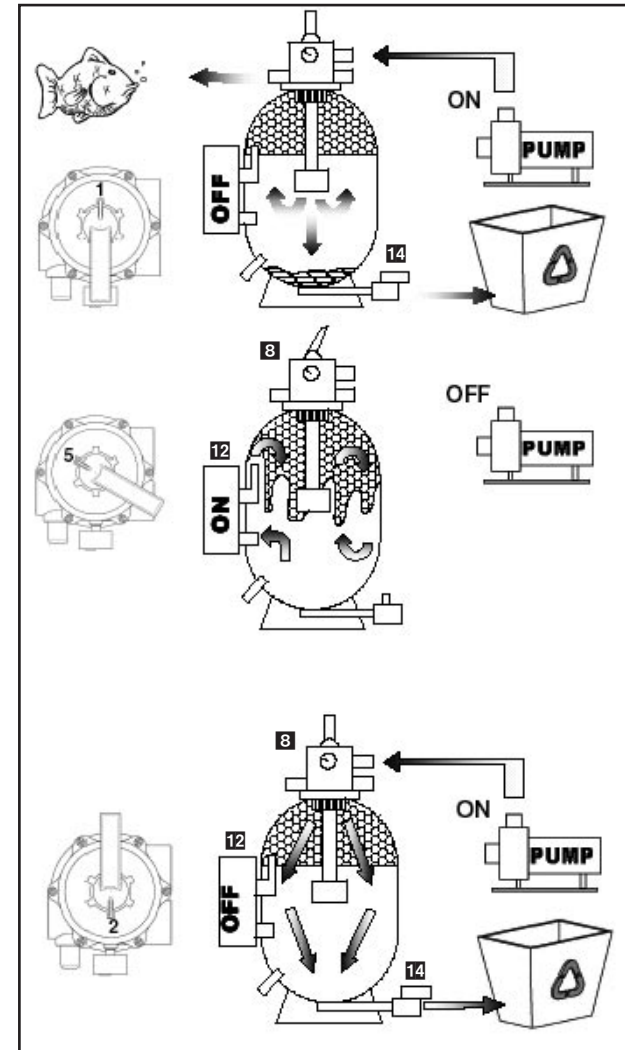


Figure 2

5) Restoring the Filter Function (Fig. 3)

- 1) Switch the pond pump off.
- 2) Close the bottom drain (14).
- 3) Restore the 6-Way valve (8) to the “Filter” position (sector 1).
- 4) Switch the pond pump on.
- 5) Now your filter is restored.

Attention!! After the first operations to restore the filter it is possible to find some beads in the pond.

A weekly filter cleaning is suggested.

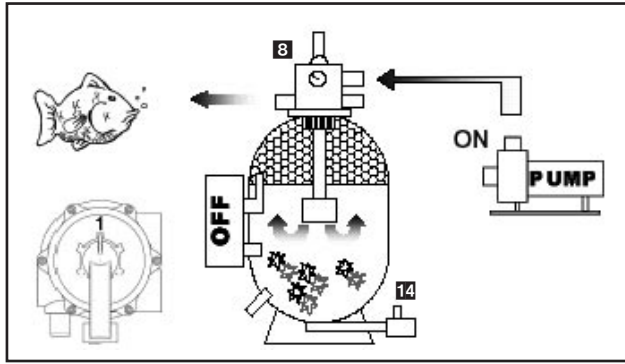


Figure 3

6) Winter Storage (Fig. 4)

- 1) Make sure that the pond pump is switched off.
- 2) Move the 6-Way valve (8) to “Winter” position. (Sector number 0)
- 3) Drain the water by opening the drain plug (13), the operation will be faster if the bottom drain is open too (14) paying attention that the beads don't run out.
- 4) Wash the filter thoroughly with water. Do not use any detergents.
- 5) Store the filter in a safe location.

Damages caused from frost are not included in the warranty.

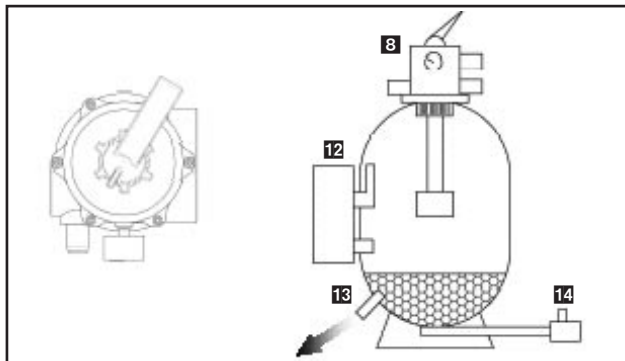


Figure 4

7) Filter Bypass (Fig. 5)

This function allows the recirculation of the pond water without having it come into contact with the filter media. It can be used when chemical treatments are being used in the pond.

- 1) Make sure the pond pump is switched off.
- 2) Move the 6-Way valve (8) to the “Recirculate” position. (Sector number 4)
- 3) Switch the pond pump on.

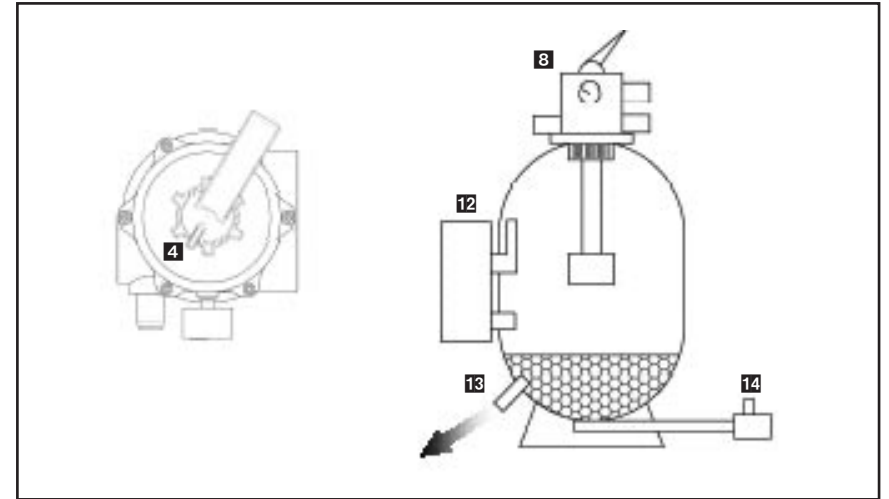


Figure 5

Troubleshooting

Problem	Possible Cause	Solution
Beads inside the pond	Wrong filter assembly	Makes sure filter assembly has been done correctly
Poor water flow from filter even after the filter has been back flushed	The agitation system does not work	Make sure that the pump is connected to the correct power supply.
	The internal jets are blocked	Open the filter and check the internal jets for blockage. If they are blocked then rinse the jets.
	The beads stick together	Open the filter and separate the beads. Back flush the filter more often
The pond water is becoming dirtier	The filter cleaning is not getting properly done	Read the filter cleaning instructions and perform cleaning on a weekly basis.

Replacement Parts

Part Number	Description
29508	Replacement Beads

NOTE: You will need 1 bag of beads for the 4000 and 2 bags for the 8000.

Also Consider...

More great by Aquascape products:

EcoSystems® EcoBlast™

EcoBlast™ are Aquascape's #1 treatments for breaking down algae! Quickly start using EcoBlast™ to spot treat the trouble areas in the pond and follow up with S.A.B.™ Extreme on a monthly basis to help keep it clear! Fast Acting! EcoBlast™ are not temperature sensitive and can be used during colder temperatures. 100% safe for fish.

EcoBlast™ applications are based on sq.ft. of affected areas:

8.8 oz./250 Grams treats up to 220 square feet

38.4 oz./1.1 Kilograms treats up to 960 square feet

7 lb./3.2 Kilograms treats up to 2,800 square feet



EcoSystems® S.A.B. Extreme

S.A.B.™ Extreme is designed to restore balance to the pond ecosystem by breaking down organic material that creates problems for pond hobbyists in and around waterfalls, rocks, stream beds, plant pots, pumps and filtration systems.

S.A.B.™ Extreme is actually 3 products in 1! We have taken the natural ingredients that make up S.A.B.™ and combined them with the degrading powers of Activated Barley™ and the natural biological filtering powers of AquaClearer™ Extreme Dry Bacteria

- Helps break down organic materials that create debris problems around waterfalls, rocks, plant pots, pumps and filtration systems
- Fortified with AquaClearer™ Extreme Dry Bacteria & Enzymes
- Works great in combination with EcoBlast™

8.8 oz. treats up to 2,700 gallons

38.4 oz. treats up to 12,000 gallons

7 lb. treats up to 33,800 gallons



DISCLAIMER

Except as stated below, there are no other representatives or warranties related to the product or its use. THE USER SHALL DETERMINE THE SUITABILITY OF THE PRODUCT FOR THE USER'S INTENDED USE, AND THE USER ASSUMES ALL RISKS AND LIABILITIES WHATSOEVER IN CONNECTION THEREWITH. Seller and manufacturer's only obligation is the repair and or replacement of the submersible light housing as stated below. ALL IMPLIED WARRANTIES ARE HEREBY EXCLUDED, INCLUDING, BUT NOT LIMITED TO ANY IMPLIED WARRANTY OF MERCHANTABILITY OR FITNESS FOR A PARTICULAR PURPOSE. Neither seller nor the manufacturer shall be liable for any injury, loss, or damage whether direct, incidental, or consequential arising out of the use or inability to use the product. The national Electric Code, Article 680-41 (A), requires a Ground Fault Circuit Interrupter (GFCI) to be installed in the branch circuit supplying fountain equipment rated above 15 volts.

The product is warranted against defective materials and workmanship for a period of 2 years from the date of purchase. Contact the installer or place of purchase if the product should fail within the warranty period.

Warranty shall be totally null and void in the event the Powerbead® Filter is abused, misused, or used for a purpose other than for which the product is intended.

2 YEAR WARRANTY